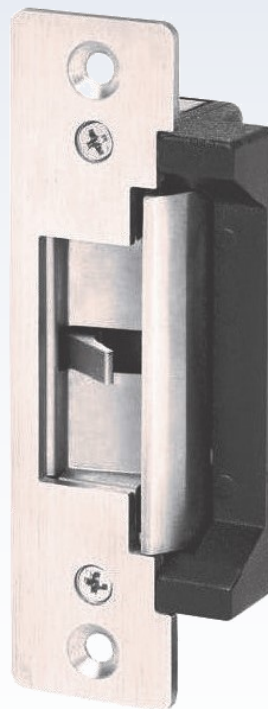


125SD Security Door Strike

***Fail-safe or fail-secure with latch
position monitoring***



Product Features

- Latch position monitoring built-in as standard
- Holding force 500kg (1100lb)
- Fail-safe or fail-secure operation
- Stainless steel faceplate and strike
- Compact case
- Low power consumption
- Easy to install

The 125SD is a 12VDC ANSI style security strike complete with stainless steel faceplate and strike for use on metal or wooden / timber door frames.

This easy-to-install strike can be used in both fail-safe and fail-secure environments, with the added benefit of a built-in sensor to monitor the latch position—a feature essential for all high security access control applications.

Technical Data

Material

Case Black coated zinc
Faceplate & Strike Stainless steel

Supply Voltage

+12VDC

Holding Force

500kg (1,100lb)

Operating Temperature

−5°C to +55°C

Current Consumption

280mA at +12VDC (±10%)

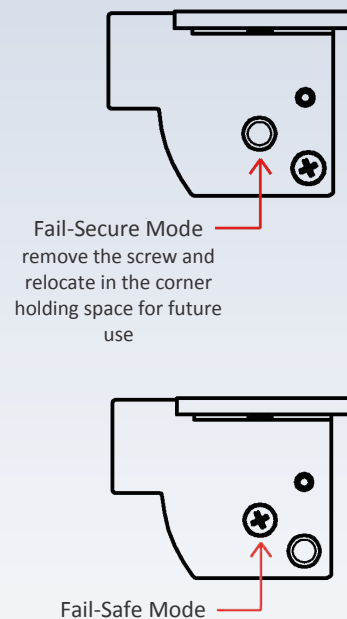
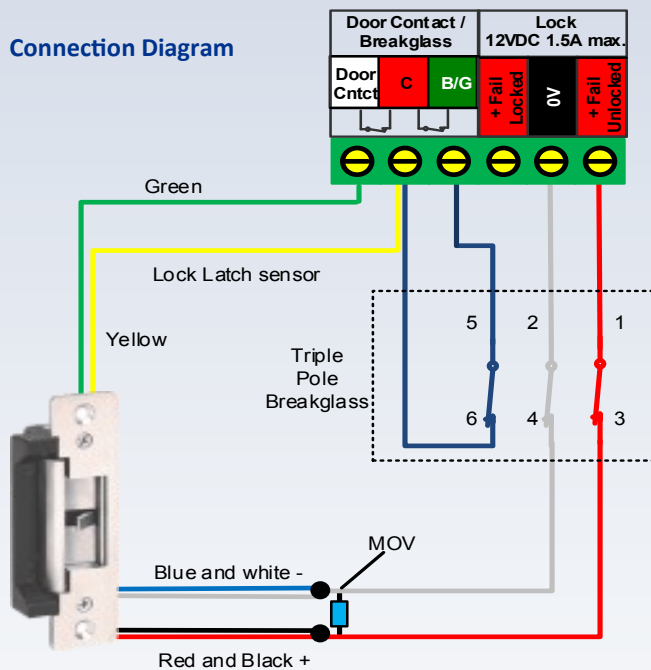
Dimensions

124.0 x 44.0 x 32.5 (4.88 x 1.73 x 1.28")

Operating Mode—Fail-Secure or Fail-Safe

To change the operating mode from fail-secure to fail-safe, simply change the location of the screw as detailed below.

Connection Diagram



Warranty Period

The equipment is guaranteed against defects in materials and workmanship for 1 year from date of shipment (see warranty policy for details).

Part Number

310-207.2 125SD—Security Door Strike with monitoring



27-28 Shrivenham Hundred Business Park, Watchfield, Swindon,
Wiltshire SN6 8TZ United Kingdom
Tel: +44 (0)1793 784002
Fax: +44 (0)1793 784005
Email: info@axxessid.com
Website: www.axxessid.com

Distributor: