

## Installation Guide

# AX200

## Installation Guide

**Axxess Identification Ltd**

27-28 Shrivenham Hundred Business Park,  
Watchfield, Swindon, Wiltshire SN6 8TZ  
United Kingdom  
Tel: +44 (0)1793 784002  
Fax: +44 (0)1793 784005  
Email: [info@axxessid.com](mailto:info@axxessid.com)

## Installation Guide

Microsoft® is a registered trademark of Microsoft Corporation.  
Windows™ is a registered trademark of Microsoft Corporation.  
AX200 version 2.0  
Revision 0508

Document Title: AX200 Installation Guide

This document contains proprietary information of Axxess Identification Ltd. Unauthorised reproduction of any portion of this manual without the written authorisation of Axxess Identification Ltd is prohibited. The information in this manual is for informational purposes only. It is subject to change without notice. Companies, names and data used in examples herein are fictitious unless otherwise noted. Axxess assumes no responsibility for incorrect information this manual may contain.

©2004-2008 Axxess Identification Ltd  
27-28 Shrivenham Hundred Business Park, Watchfield, Swindon  
SN6 8TZ United Kingdom

Telephone +44 (0)1793 784002  
Fax +44 (0)1793 784005

Email [info@axxessid.com](mailto:info@axxessid.com)  
Web [www.axxessid.com](http://www.axxessid.com)

## Installation Guide

This Installation Guide details the initial setup and steps to get the AX200 software operational. For further information and additional features please refer to the AX200 software manual.

Complete software installation and TCP/IP configuration must be performed whilst logged into Windows with full Windows Administration rights.

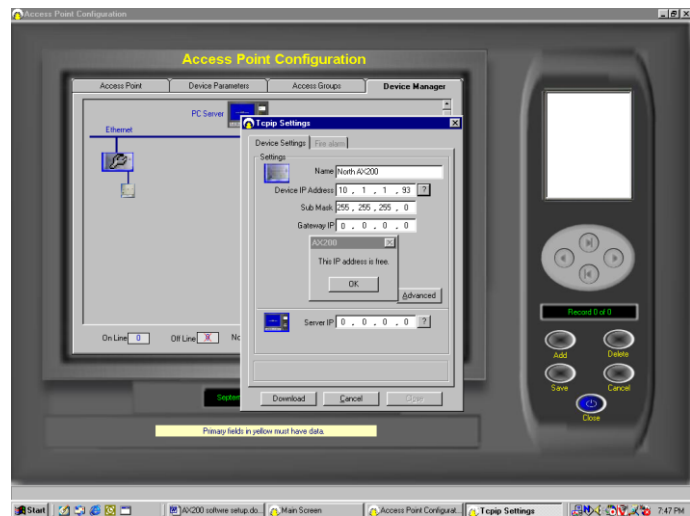
## AX200 Software Setup

1. Install the AX200 software. Insert the CD, if auto run is disabled then click Start and select Run. Enter d:\setup.exe in the text box and click OK. (Note substitute the CD-ROM drive letter in place of d) Follow the on screen instructions to complete the installation.
2. Ensure that the PC is connected to the network and the AX200's are connected to the network but powered off.
3. Ensure that the PC has a fixed IP address.
4. Start the AX200 software and enter the user name and password to login. The default user name is "1" and the default password is "1". Allow the software to initialise.
5. Power up the first AX200 and the AX100(s) connected to this controller.
6. Click on the Access point button located near the bottom left on the screen.
7. Click on the last Tab Sheet labelled as Device Manager.
8. Wait for approximately 10 seconds and the device manager will seek all of the AX200's connected to the network that are powered on. New AX200's will be displayed in red; previously configured AX200's will be displayed grey. (AX200's previously configured but not online will be displayed as Grey with a red cross) Double click on the Red AX200.

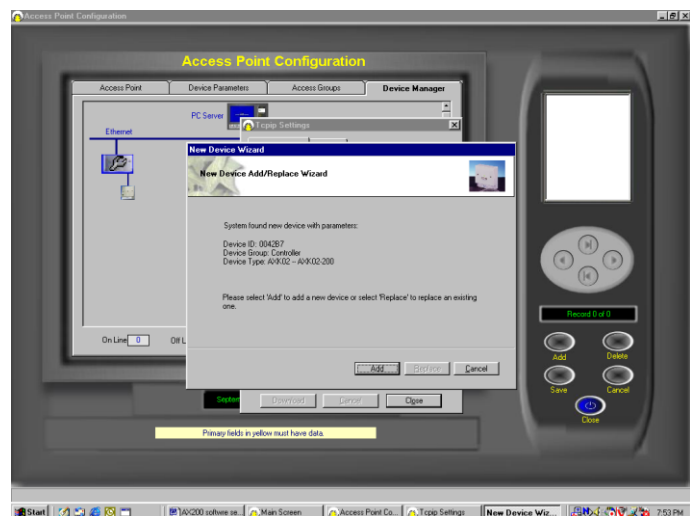


## Installation Guide

9. Click on the ? at the end of the Server IP address. The Server IP address will fill in. On local area networks (LAN) the Device IP address and the Server IP address will match for the first 3 numbers (Segment address) and the last number will be unique to the AX200.

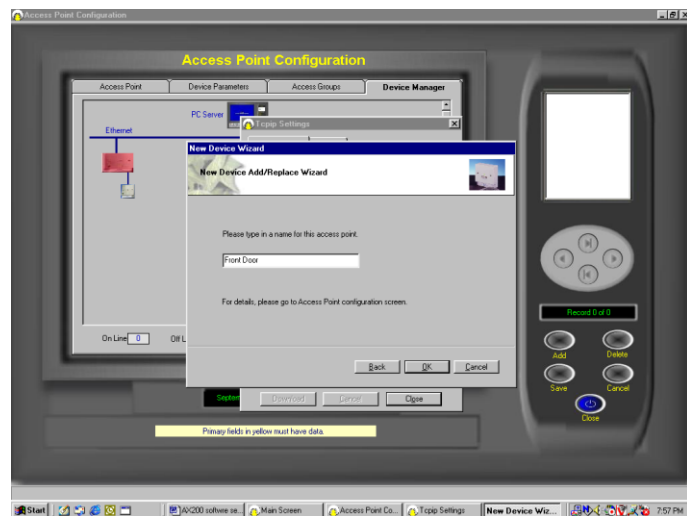


10. Enter a name for the AX200 and an IP address for the device. To ensure that this IP address is not already assigned click on the ? next to the device IP address. Do not use an IP address that is already assigned as this will cause the system not to operate correctly. Enter the subnet mask and if advised by the network administration manager, enter the gateway IP address for this device.
11. Click on the download button and confirm by clicking yes. After approximately 5 seconds the AX100 add wizard will appear.



## Installation Guide

12. Click Add. Select the type of reader (with or without PIN) then click next. Enter a suitable name for the door location being added. Then click OK. After a brief period of time the add wizard will be completed. Access point specific settings such as lock times, IN/Out configuration may be set under Access point / Access point. When a new AX100 is added the access point screen will be displayed. Note if two AX100's are connected to the AX200 after 15 seconds the Add wizard will appear again for Device two to be added.



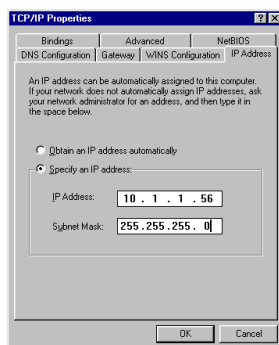
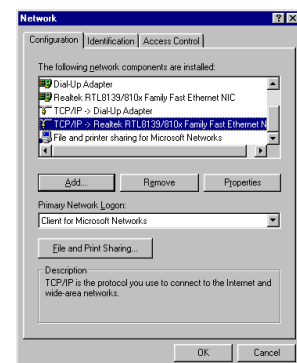
13. Close the TCP/IP settings screen and close the device manager screen or access point screen.
14. From the main screen click on the cardholder button and add a card(s) When the cardholder screen is exited the information will be downloaded to the relevant controllers and the door will lock.
15. Power up the next AX200 to be added and repeat steps 6 – 13 until all controllers are configured.

## TCP/IP Configuration (Fixed IP Address)

Refer to this section if the PC does not have a fixed IP address or for additional IP address information.

To specify a fixed IP address

Click the Windows Start button then select setting and select control panel. Double Click on the Network icon. In the components box scroll down to TCP/IP Network card name and click on it. (On Windows XP the control panel may be displayed directly from the Windows Start button) Click on Properties Button.



Select the IP Address Tab

Ensure that the system is set to Specify an IP Address and that a valid IP address is in the IP address box. (Note – most organisations allow fixed IP address ranges, and a suitable IP number is normally obtained from the network administration manager) Enter a valid subnet mask address. Typically this is set to 255.255.255.0

Click OK or Apply.

Click OK to exit the network setup and close the system control panel window. If prompted to reboot or to insert the Windows installation disk please follow the on-screen prompts.

## Installation Guide

### IP Definitions Applicable to the AX200

#### IP Address

An IP address is a unique identifier for each controller, PC or other Ethernet device. The IP address range is from 0 to 255, where 0 is null, 1 to 254 are valid numbers and 255 is a broadcast number. (Example – 10.1.1.25) Note – Consult with the Network Administrator before using any IP address to avoid duplicate numbers

#### Subnet Mask

This is the mask or range of address that the device is allowed to talk to, typically the broadcast number is used (Example 255.255.255.0 in this example permission is granted to talk to all devices on the network)

#### LAN

Local Area Network refers to structured Ethernet cabling within a local area such as a single building.

#### WAN

Wide Area Network, refers to a group of LAN's connected together such as a group of buildings.

#### VPN

Virtual Private Network, refers to a separate IP numbering system applied on WAN's that allows different equipment in various locations to communicate as a LAN

#### Gateway

The Gateway is the device used to channel IP traffic between LAN's over a WAN.

#### IP Port number

The IP port number is the number assigned for the communications over TCP to that specific IP address. The AX200 uses Port numbers 4848 for the controller and 1818 for the AX200 software.

#### Firewall

A firewall may comprise of a physical device or software on a PC and it is designed to stop malicious attacks by computer hackers or virus. **Note** Firewalls may also stop communication between the AX200 and the software unless the specified IP port numbers are listed in both the TCP and UDP protocol safe list on the firewall.

#### LAN Configuration

When working on a local area network (LAN) all devices that are configured to operate with fixed IP address such as the AX200 controller, will require the same segment address. So if the Server (PC) IP address is 10.1.1.15 then the AX200 will require an IP address with the same segment such as 10.1.1.52. When building a private network (if there is not already one there) it is recommended that the segment address is 10.1.1.x Use the subnet mask as 255.255.255.0 and the gateway IP address should be 0.0.0.0

#### WAN Configuration

When working on a wide area network (WAN) all devices that are configured to operate with fixed IP address such as the AX200 controller, will probably have a different segment address. So if the Server (PC) IP address is 10.1.1.15 then the AX200 will require an IP address with the appropriate segment such as 10.1.2.52. Use the subnet mask as 255.255.255.0 and the gateway IP address must be configured (Please consult the Network Administrator for all IP Settings)

#### VPN Configuration

Generally configure Virtual Private networks as per the LAN Configuration setup. (Please consult the Network Administrator for all IP Settings)

## Installation Guide

### Example IP Address Table

Device Name	Location	IP Address	Gateway Address	Subnet Mask Address
File & Printer Server	London	10.1.1.10	10.1.1.1	255.255.255.0
Sales PC	London	DHCP	DHCP	DHCP
AX200 PC	London	10.1.1.35	10.1.1.1	255.255.255.0
AX200 Controller	London	10.1.1.36	0.0.0.0	255.255.255.0
AX200 Controller	London	10.1.1.37	0.0.0.0	255.255.255.0
File & Printer Server	New York	10.1.2.10	10.1.2.1	255.255.255.0
Sales PC	New York	DHCP	DHCP	DHCP
AX200 Controller	New York	10.1.2.55	10.1.2.1	255.255.255.0
AX200 Controller	New York	10.1.2.56	10.1.2.1	255.255.255.0

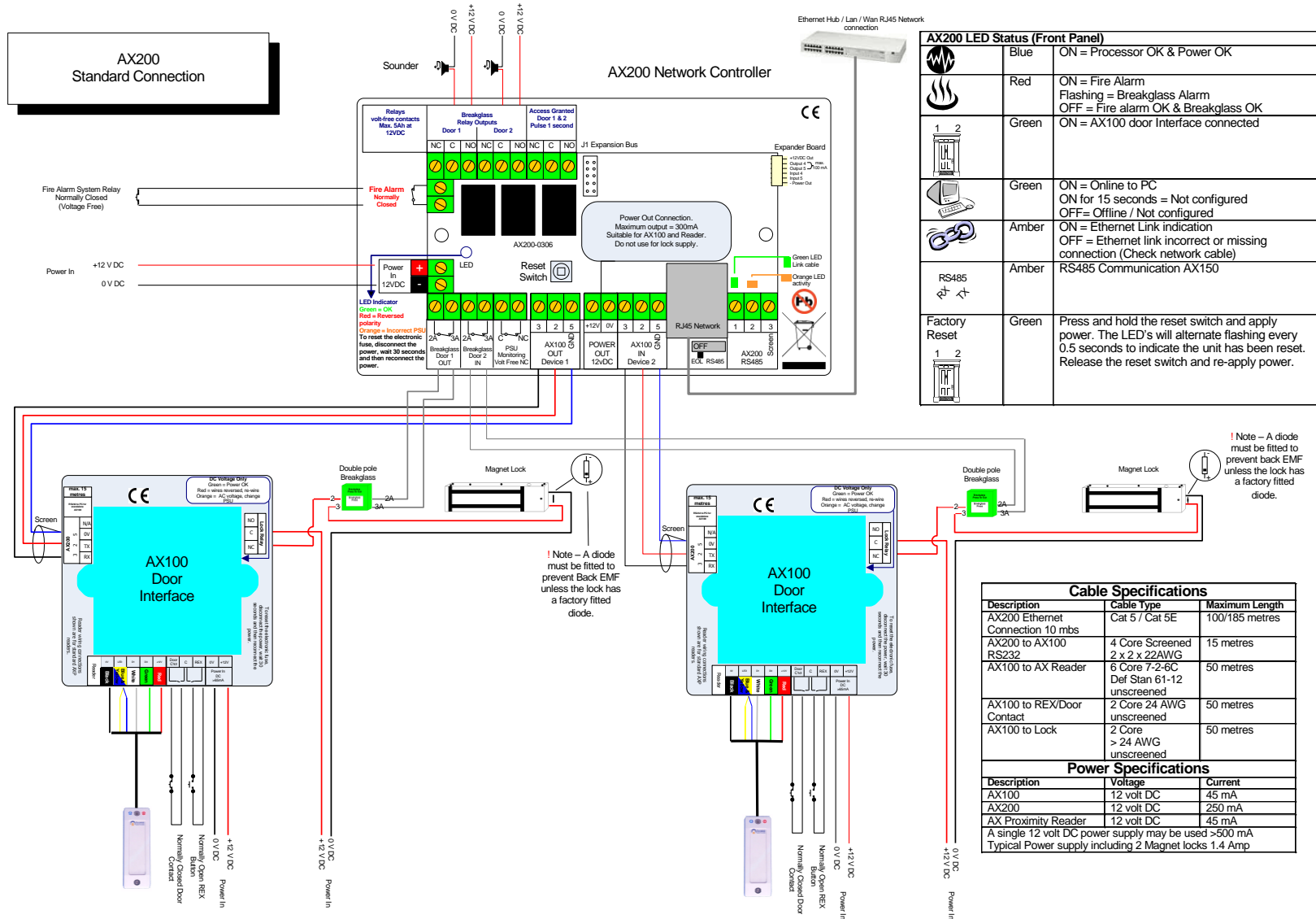
---

## Installation Guide



# Installation Guide

## AX200 Standard Connection Diagram



## Installation Guide

### AX200 In & Out Readers Connection Diagram

