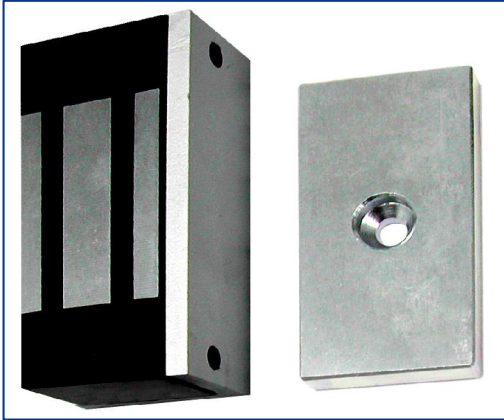


MML-40

Micro Magnet Lock



Where space is premium, fitting a Micro electro-magnetic lock could be the answer. Installation is easy and as there are no moving parts, they are virtually maintenance free.

Due to its size, this lock can be used for a whole host of applications including cabinets, lockers, racks and cupboards.

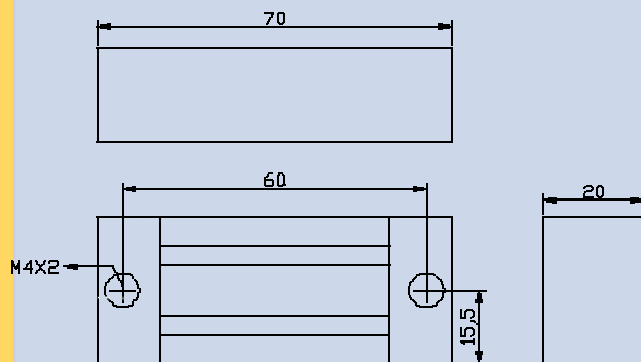
Whilst power is applied, the metal armature plate is held securely in place, once the power is cut the plate is released.

Features

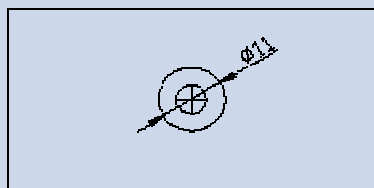
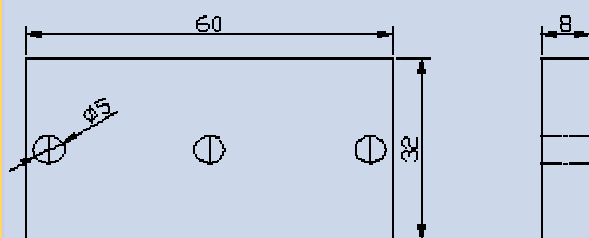
- 90 lbs (40 kg) holding force
- Magnet size 70 x 31 x 20mm
- Armature size 60 x 32 x 8mm
- Voltage / Current 12V/200mA,
- Voltage Tolerance +/- 10%
- Unit Weight 400g (approx.)

Dimensions (mm)

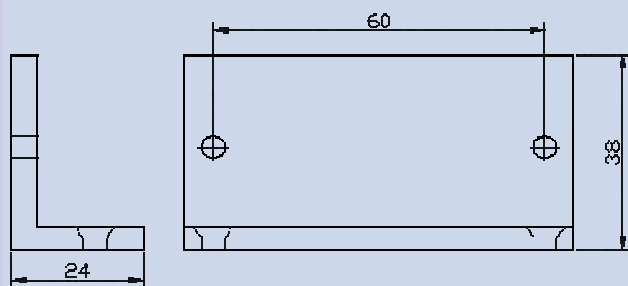
MML-40—Magnet Lock



MML-40—Armature Plate



MML-40—L Bracket



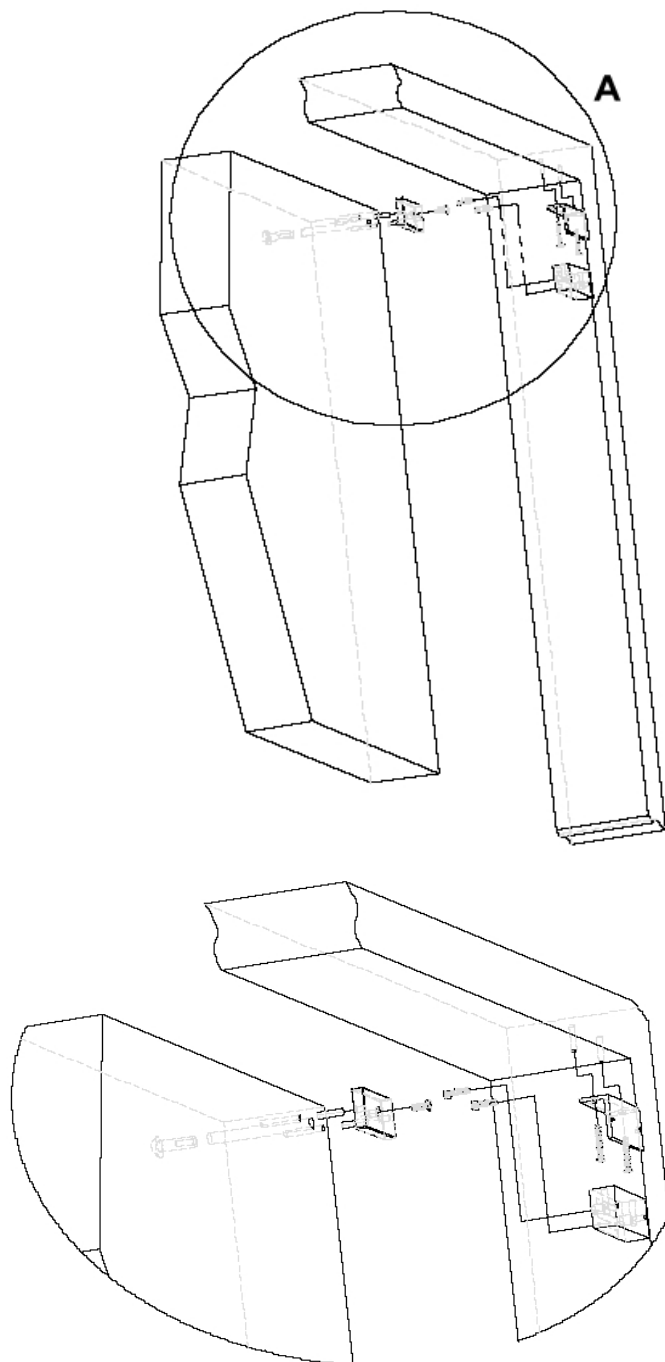
Part Numbers:

Micro Electro-Magnetic Lock

308-111

Distributor:

Installation Instructions



27-28 Shrivenham Hundred Business Park, Watchfield,
Swindon, Wiltshire SN6 8TZ United Kingdom
Tel: +44 (0)1793 784002
Fax: +44 (0)1793 784005
Email: info@axxessid.com
Website: www.axxessid.com