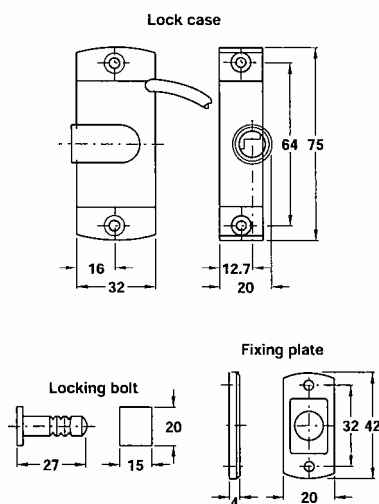


Universal Cabinet Lock

The UCL-11 is a compact monitored electro-mechanical lock ideal for use in cabinets, enclosures, roller shutters, flaps, hinged doors and drawers.

The compact size of 75 x 20 x 32mm with side locking allowing installation in even the tightest spaces.



Technical Data

- Fail-secure with floating locking bolt to compensate for any tolerances
- 12vDC 50mA
- Contact rating: 5V 10mA maximum
- Tensile load: >200 N (acc. To DIN 68 852)
- 1m cable length
- Suitable for door widths:
minimum 450mm for overlay doors
minimum 240mm for inset doors
- Dimensions: 75 x 20 x 32mm
- Weight: 100g
- Operating Temperature: 0°C to 50°C

Part Number:

UCL-11 Monitored Fail-Secure 310-228